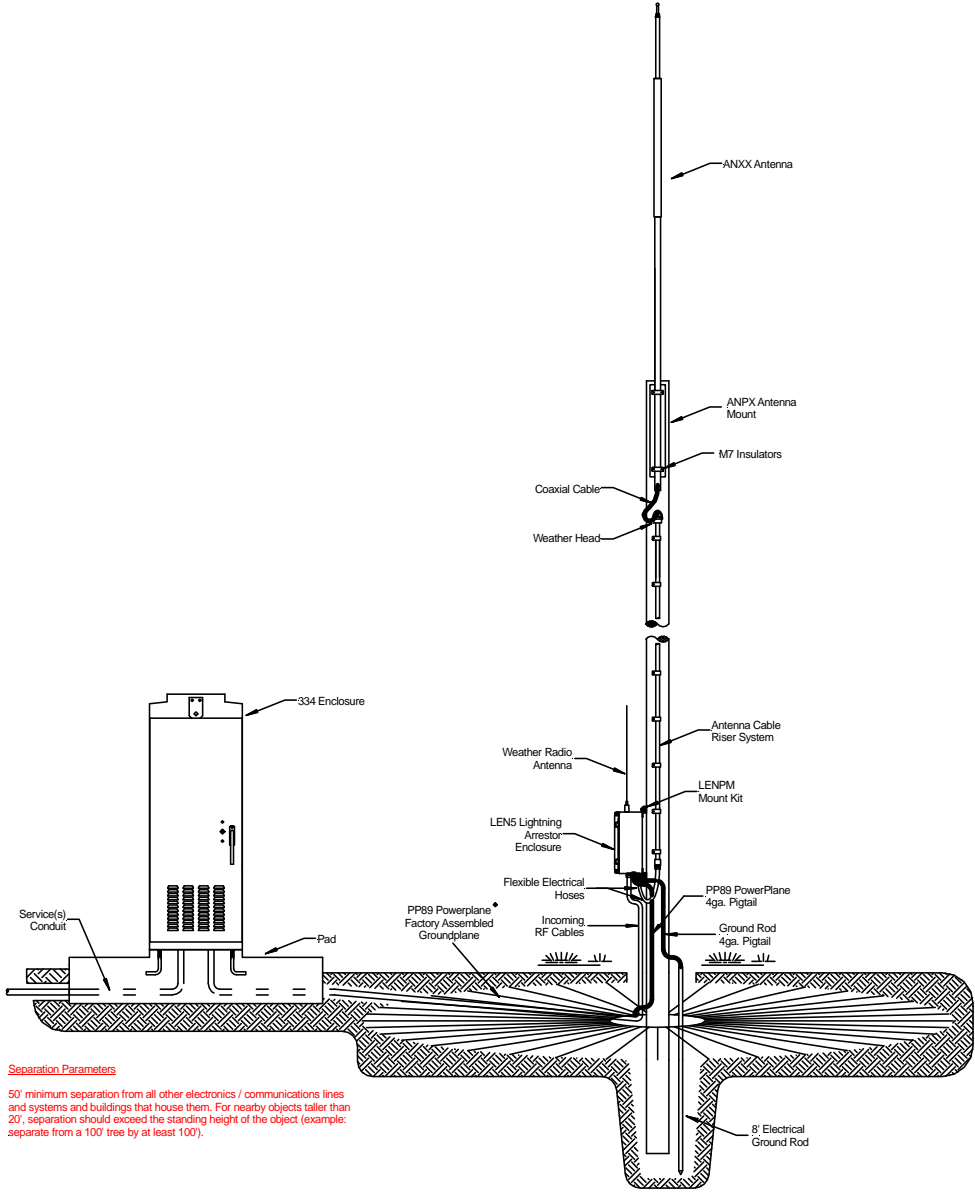


Information Station Specialists, Inc.	
Alert AM - Isolated Installation Elevation View	
Geoff Penna	24
1105	Copyright 2005, Information Station Specialists, Inc. All rights reserved.



**Separation Parameters**  
 50' minimum separation from all other electronics / communications lines and systems and buildings that house them. For nearby objects taller than 20', separation should exceed the standing height of the object (example: separate from a 100' tree by at least 100').